



**A-B-C PACKAGING
MACHINE CORPORATION**



CASE ERECTING



400 Case Erectors Tape or Hot Melt Adhesive Sealing

These workhorse case erectors are built for your real world production, to run less-than-perfect corrugated and deliver square cases to your production line. Quick changeover, wide case range, low maintenance, and always better cases.

Always better cases. You can depend on it.



We know it's not a perfect world, so we build machines that tackle production variations and keep on running. That's what made our 330 erectors an industry standard and these next generation erectors give you more features to enhance your production and reduce costs.

Take a look and you'll see why these erectors are setting new standards for case erecting productivity.



MODEL 400HS High speed hot melt sealing
For speeds to 40 cpm with servo-operated sealing ram



MODEL 400HM Hot melt sealing



MODEL 400T Tape sealing

Built for dependable, high speed operation

- Heavy gauge reinforced steel frame has welded anti-vibration box design for maximum stability and long term production
- Continuous motion mechanical main drive with sealed bearing linkage ensures high speed performance
- Soft start/soft stop motor controls maximize machine life and energy efficiency
- High capacity Piab COAX® vacuum system for consistent, high volume vacuum with reduced energy consumption

A-B-C Intelligent Machine Control simplifies setup, operation, and diagnostics

- All machine functions are accessed at the touchscreen panel. Case selection is easy and intuitive—just select the case size and speed.
- PLC with encoder uses closed loop position feedback to ensure precise operation, and non-contact sensors monitor operation
- Easily pinpoint machine or component failures with the self-diagnostic tool
- All settings are stored in memory for easy return to previous or original settings



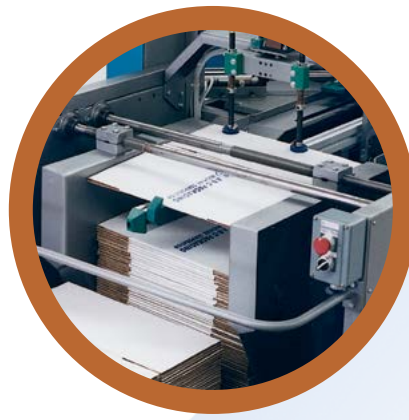


KD magazine eliminates lifting

No more lifting heavy cases—the ergonomic, floor level magazine eliminates potential liability found in mid/high level case magazines.

More time between refills

The standard high capacity magazine holds three stacks of cases for more time between refills. KD stacks feed automatically and cases can be added at any time. An extended magazine is also available.



Top feed magazine runs warped and band-marked cases

The top feed magazine design eliminates back pressure that can cause misfeeding in vertical feed magazines. Cases are lifted by dual, spring-loaded grippers that self-adjust to feed from uneven stacks caused by warped or band-marked cases.

After cases are lifted from the stack, the sidebar positively indexes them to the opening station.



Complete control for case opening

At the opening station, cases are gripped from below as the reciprocating arm pulls them open. This dual pullback system is forgiving to cases with poor manufacturer's joints and positively opens doublewall styles. An automatic blowback system keeps air lines clean.

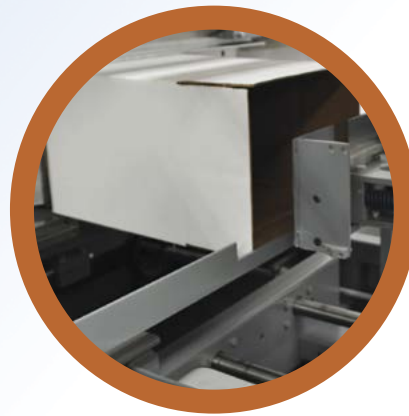


Case opening on outer flap ensures smooth inner flap closing

A-B-C's vacuum case opening technology smoothly opens even warped and bent cases, unlike pin-style openers which require straight corrugated flutes for proper operation. Cases are over-opened on the outer flaps to ensure successful inner flap closing, even when running cases with out-of-spec manufacturer's joints.

Cases are squared during transfer

Motorized walking beams continuously square cases as they travel from opening through sealing to ensure that well-formed cases are sent to your packer.



Adhesive sealing mandrel squares cases

The adhesive sealing compression mandrel has stationary lugs that square the case during compression, and soft-glide operation provides smooth and secure adhesive sealing.

Tape roll change is quick and easy

The tape head is easily accessible for replacement by simply sliding open the guard panel. Low tape/no tape sensors can provide visual indication of roll status and eliminate tape head rethreading by preventing tape runout.



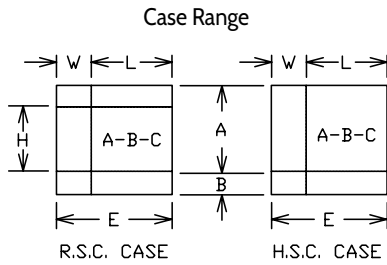
Positive case discharge to takeaway conveyor for a continuous case flow

A standard feature, this stationary discharge chute uprights and feeds cases from the machine exit to the conveyor for a constant case feed to your line.

5 minute changeover

Changeover is easy using rapid adjust hand cranks and slides with locking handles. Automatic changeover with motorized adjustment is also available.

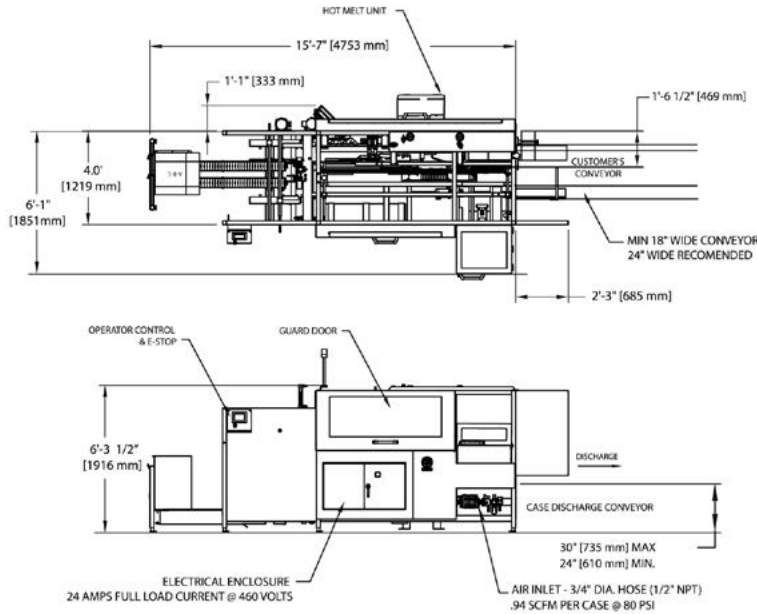
400 Case Erector/ Sealer Series



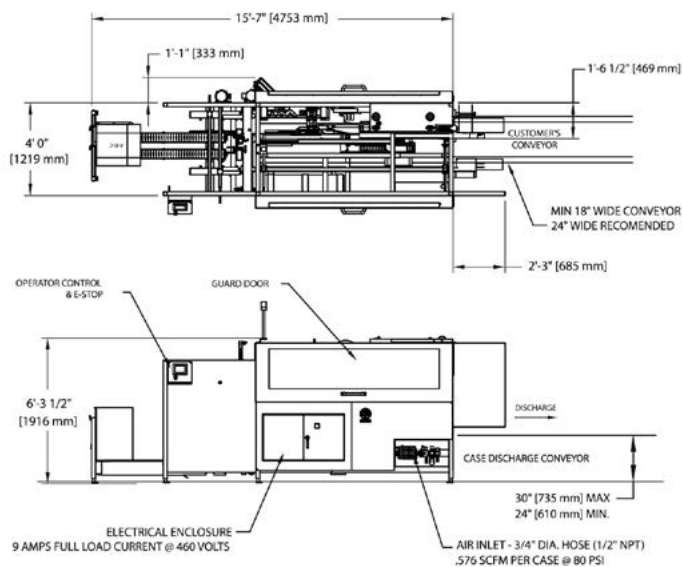
	MIN.	MAX.
A	5-1/2" *	23-1/2"
B	2-7/8"	8"
L	7"	22-3/4"
W	5-3/4"	16"
H	3"	15"
E	12"	38"

Max. K.D. Length: 38"
 K.D. Length: 12" to 38"
 K.D. Width: 8" to 31-1/2"
 * Minimum A height is 7" on tape sealing model

400HS hot melt sealing (high speed model)



400T tape sealing



Quality features for a better machine:

- 400T Variable speed 10 - 35 cases/minute*
- 400HM Variable speed 10 - 30 cases/minute*
Speed can ramp up and down - all settings including adhesive adjust automatically
- 400HS Variable speed 20 - 40 cases/ minute* (includes high speed case indexer and servo-controlled sealing ram as standard features)
- High efficiency motors
- Soft Stop - quits operation without dumping air
- Cycle Stop - cycles out all cases before stop
- Main drive jog function
- Manual operation of all functions incl. glue test
- Proximity sensors with quick disconnect
- Elevated beacon fault light
- Case discharge back-up eye for surge control
- Hot melt model can be converted to tape sealing/ Tape model to hot melt sealing
- Self-lubricating air cylinders
- Automatic air filter / lubricator / water eliminator
- Standard fault detection features:
 - No/low air pressure
 - Downstream case backup
 - Case magazine is empty or low
 - Guard door opened
 - Case did not open properly
 - Emergency stop activated
 - Motor overload
 - Encoder or coupling malfunction
 - Individual sensor malfunction
 - Minimum speed fault
 - Fault alarm history record

Optional features:

- Magazine extensions for additional capacity
- CSSC case capability
- Servo-controlled sealing ram standard on 400HS, optional on 400HM
- Repeatable position indicators on adjustment shafts
- Low tape-No tape sensors ensure quick roll replacement and eliminate tape head rethreading

* Dependent on case sizes, consult factory.

All information in this brochure was current at time of printing, however, in the continuing effort to improve the quality and construction of A-B-C machines, we reserve the right to make changes without notice. Guards may be opened or removed for photos shown.

C-160-12/17



ERECTORS



PACKERS



SEALERS



PARTITIONERS



PALLETIZERS



DEPALLETIZERS



DECASERS